

# Canon



## CORPORATE SOLUTIONS



**Color**  
**imageRUNNER®**  
C 4 0 8 0 SERIES

**meap**  
POWERED BY

## CORPORATE SOLUTIONS

### A NEW ERA OF COLOR – THE CANON COLOR imageRUNNER C4080 SERIES

Unleash power, speed, flexibility, and connectivity in your office

With robust functionality, advanced print engine technology, superior paper-handling, and professional finishing options, the Color imageRUNNER C4080 Series models are the ideal multifunction devices for your office.

The Color imageRUNNER C4080 Series delivers output at speeds of up to 40 pages per minute (letter) in monochrome and up to 36 ppm (letter) in brilliant color. Fast print speeds and warm-up times are achieved through Canon's Twin-Belt Fusing Technology. And at true 1200 dpi, every word will appear with absolute clarity with the highly precise four-beam laser scanner.

A fast and reliable 100-sheet Duplexing Automatic Document Feeder (DADF) enables you to efficiently scan/copy high-volume documents at up to 70 impressions per minute (ipm) at 300 dpi in black and white and color.

Two versions of the Color imageRUNNER C4080 Series are available—an “i” model and a “Base” model. The “i” model, designed for general office environments, is bundled with features providing out-of-the-box business productivity. The “Base” model is highly customizable and offers a selection of options to best fit demanding color environments.

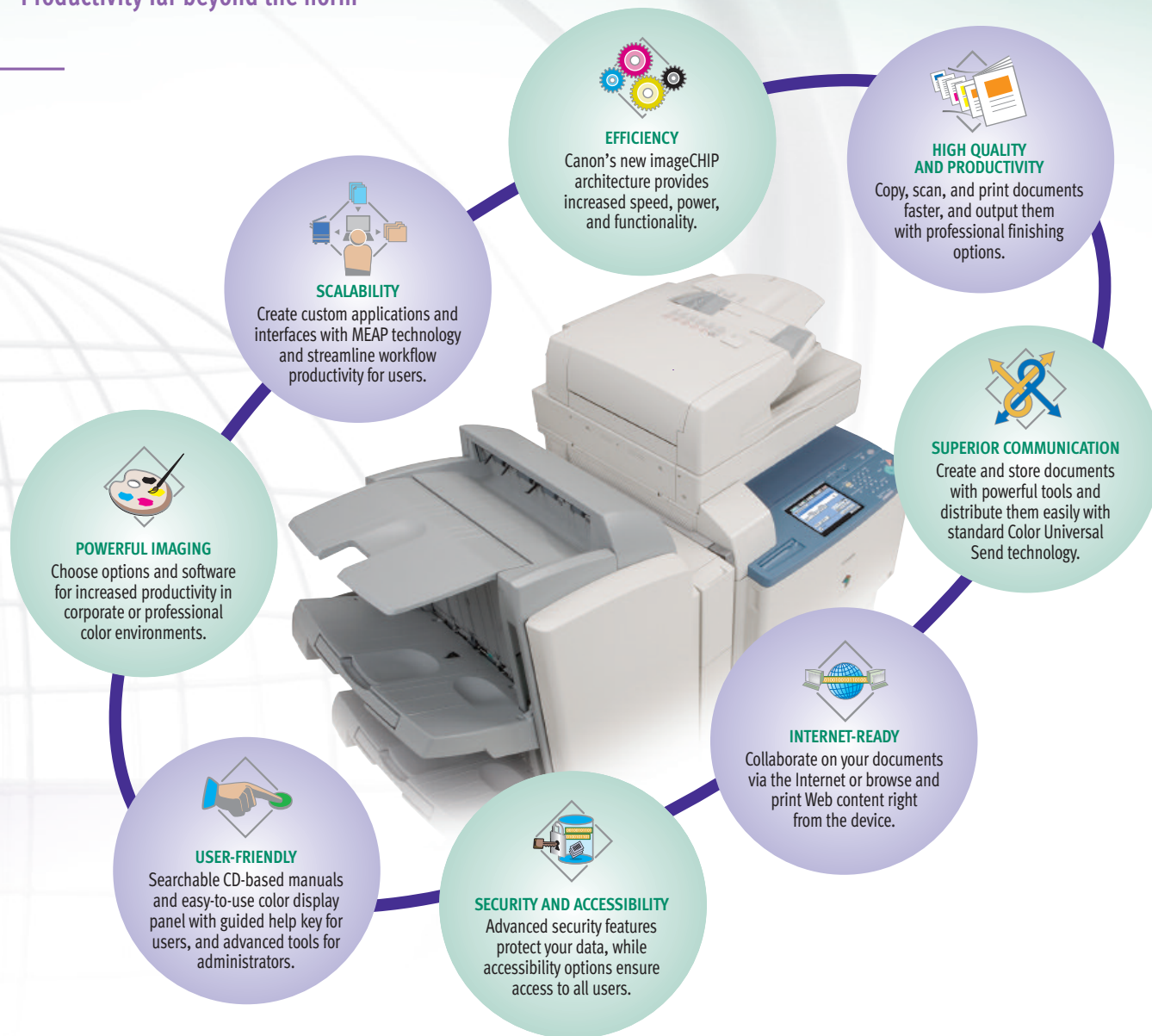
The Color imageRUNNER C4080 Series provides memory capacity of up to 1.5GB, an 80GB hard drive, and Canon's innovative MEAP® (Multifunctional Embedded Application Platform) technology for customized workflows. With high-capacity finishing options, professional output is available for any project.

When it comes to connectivity, the Color imageRUNNER C4080 Series enables efficient document distribution with Canon's Color Universal Send technology. Standard on all models, it provides comprehensive dissemination of information simultaneously to multiple locations across the hall or around the globe.



## COLOR imageRUNNER C4080 SERIES OVERVIEW

Productivity far beyond the norm



Function	Color imageRUNNER C4080	Color imageRUNNER C4080i
Copy	Standard	
Mail Box	Standard	
Print	Optional:* UFR II, PCL, PostScript Emulation,** Adobe® PostScript® 3™	Standard: UFR II, PCL Optional: PostScript Emulation**
Scan	Standard: Color Network ScanGear	
Color Universal Send	Standard: Color Universal Send	
	Optional: Universal Send PDF Advanced Feature Set	Standard: Universal Send PDF Advanced Feature Set
	Optional: Universal Send PDF Security Feature Set	Standard: Universal Send PDF Security Feature Set
Super G3 Fax	Optional: Single-Line or Multi-Line	
Web Access	Optional	
MEAP	Standard	

\* Choose one of three print controller options: UFR II/PCL Printer Kit-N2, imagePASS-H1, or ColorPASS-GX100.

\*\* PS Printer Kit-N2 option requires the UFR II/PCL Printer Kit-N2; also requires 512MB RAM.





## THE ANATOMY OF AN EFFICIENT PERFORMER

### Canon imageCHIP System Architecture

- imageCHIP architecture provides more speed and power for greater productivity
- Up to 1.5GB RAM and 80GB HDD
- Dedicated dual processor design
- Mail Box: local archival solution
- Remote UI device management



### Robust Speed

- Up to 70-ipm high-speed color and black-and-white scanning
- Standard 100-sheet Duplexing Automatic Feeder
- 40 ppm (black and white); 36 ppm (color) printing

### Reliable Consumables and Supplies

- Durable Canon OPC Drum
- Easy-to-replace toner cartridges
- Oil-free color S-toners



### Accessibility Options

- Voice Operation Kit
- Remote Operator's Software Kit
- ADF Access Handle
- Braille Label Kit



### Advanced Finishing Options

- Three types of finishers
- Corner, double, saddle-stitch
  - Extensive stacking capacity
- Hole-punching
- Two or three holes

### Superior Paper-Handling

- Up to 5,000-sheet paper capacity
- 100-sheet Bypass Tray; Alignment Tray Option
- Up to 140 lb. Index media weights
- Up to 12" x 18" media sizes

Finisher-X1



Finisher-W1



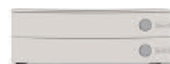
Saddle  
Finisher-W2



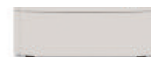
Puncher  
Unit-AH1



Cassette  
Feeding Unit-Z2



Plain  
Pedestal-E1



Paper Deck-Y1





## HIGH QUALITY AND PRODUCTIVITY

### Uncompromising business performance

#### NEW-GENERATION IMAGE PROCESSING

The Color imageRUNNER C4080 Series is powered by Canon's evolutionary imageCHIP system architecture. This not only enables simultaneous copying, printing, scanning, sending, and faxing, but it will change the way you think about using color in your office.

#### DIGITAL DYNAMICS

Adding digital data to copies and prints is easy and powerful. Create ad hoc watermarks, select preset stamps, add page and copy set numbering, and/or date stamping to any output with control over size, position, colors, and density. You can also embed secure watermarks that appear when copies are made to help prevent security leaks of confidential information.

#### Secure Watermark



Original document with hidden text and background color

Hidden text appears on copies that are made

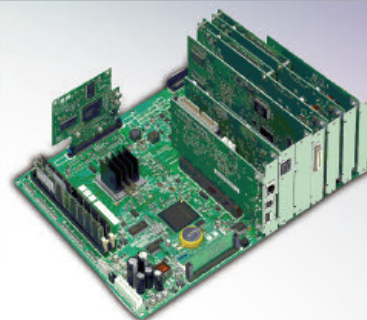
#### THE PERFECT FINISHING TOUCHES

The Color imageRUNNER C4080 Series offers professional finishing options that collate, staple, hole-punch, or saddle-stitch to create impressive documents efficiently. And with Automatic Creep Correction, each page in your large booklets will be perfectly positioned.

#### Saddle Finisher-W2



#### imageCHIP System Architecture



#### COMPLEX JOBS MADE SIMPLE

The Color imageRUNNER C4080 Series makes the production of complicated documents manageable. Users can combine different sets of documents into one with Job Block Combination. Each set can be configured to run with unique settings, such as paper type, finishing, color, and more, then reproduced or stored as a new document in a Mail Box. From the desktop, individual or groups of pages in documents can be configured with the new Exceptional Settings tab\* in the print driver to control output settings, such as media type, paper size, input tray, and finishing options.

#### BRILLIANT BUSINESS COLOR

For general office environments, the Color imageRUNNER C4080 Series efficiently tackles print tasks for Microsoft® Office applications. It supports Canon's UFR II (Ultra Fast Rendering), PCL, and XPS,\*\* as well as an option for PostScript 3 emulation.

#### FASTER COPYING

Copy operations are greatly simplified through the choice of two user interfaces. The standard copy display simplifies operations for novice users, while an Express Copy menu provides advanced users quick access to various copying modes on a single screen.

#### Express Copy Screen



\* Requires PS Printer Kit-N2 option.

\*\* Please check with your Authorized Canon Dealer for availability.

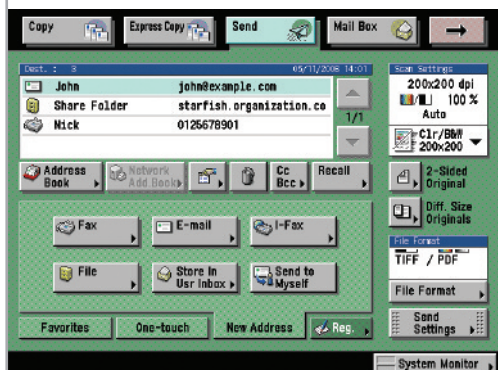


## SUPERIOR COMMUNICATION

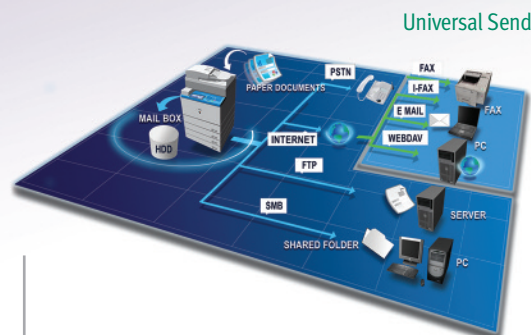
### Enhance your digital world with Color Universal Send

With Canon's proprietary Universal Send technology, the Color imageRUNNER C4080 Series enables you to distribute scanned documents to multiple network destinations—such as e-mail and Internet fax addresses, local Mail Boxes, fax, network folders, and document management systems—in one simple operation. Quickly and easily send documents to user addresses in a local Address Book, look up users from multiple LDAP servers on your network, or manually enter a destination. When Single Sign-On (SSO) or Simple Device Log-in (SDL) authentication modes are used, a new time-saving feature enables you to send documents to yourself in a single click.

Color Universal Send offers powerful options to master creation, distribution, and archiving of your documents. Universal Send PDF Advanced Features (standard on the "i" model) provide additional functionality such as PDF High Compression, Trace & Smooth PDF, and Searchable PDF modes.



Send Main Screen



Universal Send

### FILE SIZE COMPARISON

Original: Letter-Sized Hard Copy (Color Graphics with Text)

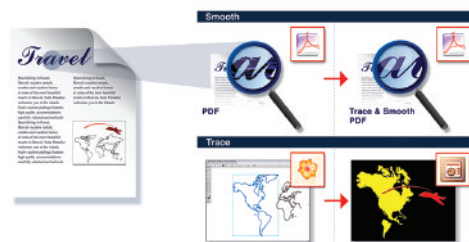
Canon's PDF (Compact)	PDF File Format	PDF File Format
300-dpi Color Scan	300-dpi Color Scan	300-dpi B/W Scan
File Size: <b>150 KB</b>	File Size: <b>2 MB</b>	File Size: <b>390 KB</b>

PDF High Compression Mode

### PDF HIGH COMPRESSION TECHNOLOGY

To reduce network bandwidth requirements when sending color documents, Canon's proprietary PDF High Compression Mode can significantly reduce the size of PDF files. And with Canon's exclusive Trace & Smooth PDF feature, text in PDF files can be converted to outlines for sharper edges and increased readability. The outline data can also be manipulated in Adobe Illustrator® to create elements for other documents.

### Trace & Smooth PDF



### CREATING SEARCHABLE PDF DOCUMENTS

After scanning for PDF creation, the text is then embedded within the file for extraction or keyword searches with the Searchable PDF feature. This allows you to easily scan and convert scanned documents into your electronic workflow.





## HIGH-VOLUME FAX CAPABILITY

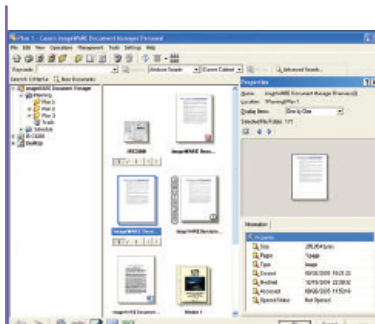
The Color imageRUNNER C4080 Series supports the option to add a single- or multi-line Super G3 fax module to further extend the capabilities of Color Universal Send. Incoming faxes can also be automatically routed to other devices, destinations, or users with the Job Forwarding feature for superior workflow management.

## ADVANCED WORKGROUP COLLABORATION

The Color imageRUNNER C4080 Series includes internal Mail Boxes for document storage and print-on-demand applications. Documents can be combined and printed as a single job or sent to multiple destinations in a variety of formats. For files that are too large for e-mail or require a large distribution list, the URL Send feature can e-mail a link to notify recipients that they can remotely preview via PC and, if necessary, print from the device.

## DESKTOP INTEGRATION

The Color imageRUNNER C4080 Series is designed to work seamlessly with Canon's imageWARE™ Document Manager Personal Version 4 as a total end-to-end document solution. You can capture, archive, retrieve, and manipulate documents within the imageRUNNER devices' Mail Boxes right from your desktop computer, seamlessly integrating your workspace with the device.



imageWARE Document Manager Personal Version 4

## INTERNET-READY

### Maximize the power of the Web

The Color imageRUNNER C4080 Series provides more ways to share information with the world beyond your office than ever before.

## WEB BROWSING AND PRINTING

With the industry's first Web Access Software option, you can browse the Web or corporate intranets directly from the device's color touch-panel. The Web Access function enables you to print Web pages or PDF files from the Internet or your network, even when you don't have access to a computer.\*

## WEB-BASED DOCUMENT COLLABORATION

Color Universal Send supports the Web-based Distributed Authoring and Versioning (WebDAV) protocol, enabling you to securely send documents to a shared storage service over the Internet. Collaborate on documents with others, whether they're in the office, on the road, or at home—for increased productivity.



Web Access Software

\* When configured on the "Base" model, requires UFR II/PCL Printer Kit-N2 if printing Web pages; requires PS Printer Kit-N2 on "Base" and "i" models if printing PDF files.



## POWERFUL IMAGING

### Flexible color productivity for your office

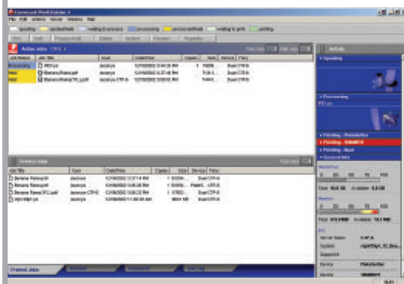
Canon offers flexible print controller options developed for the Color imageRUNNER C4080 “Base” model. The ColorPASS-GX100 and imagePASS-H1 controllers increase productivity and color quality for corporate and professional color environments.

#### imagePASS-H1 CONTROLLER

The imagePASS-H1 is a high-performance embedded controller designed to handle color-intensive multi-user environments. Featuring a dedicated Intel® Celeron® M 1.5GHz processor, the imagePASS-H1 provides improved color matching, genuine Adobe PostScript 3 support, and PCL.



imagePASS-H1



EFI Utility

#### ColorPASS-GX100 CONTROLLER

The ColorPASS-GX100 is a powerful external server which caters to graphic-intensive users and production environments. Driven by an Intel Pentium® 4 3.2GHz processor, the ColorPASS-GX100 controller supports demanding color image and high-volume processing.

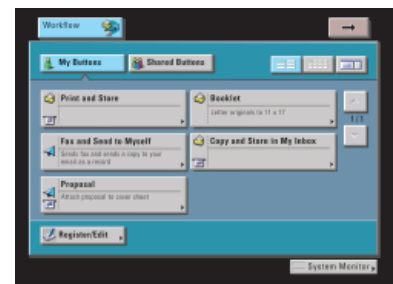
## SCALABILITY

### Solutions that evolve with your business

As your business grows, the Color imageRUNNER C4080 Series will continue to provide value with features and options designed to extend your capabilities.

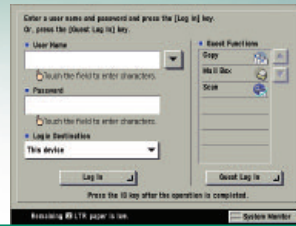
#### OPERATIONAL EFFICIENCY

Breeze through complex tasks and help to reduce operator mistakes using the new Workflow Composer option. Workflow Composer enables users to configure one button to perform multiple actions, such as copying, sending, and storing at the device in a single step. For even greater convenience, workflow buttons can also be created and edited from the desktop.



Workflow Composer Screen





Access Management System Screen

## USER-FRIENDLY

### Simplicity for users

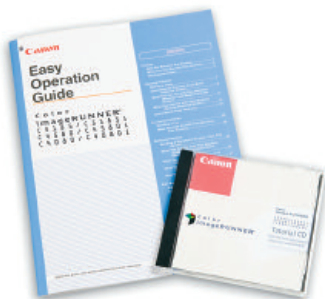
For users, the Color imageRUNNER C4080 Series facilitates operations with its easy-to-read full-color touch panel, interactive help menus, insightful documentation and tutorials, and remote operation capabilities. Streamlined administration is achieved through powerful features for user access and privileges, and device management.

### SUPPORT TOOLS FOR OPERATORS

Whether you're a beginner or an advanced user, the Color imageRUNNER C4080 Series is easy to navigate. An easy operation guide provides step-by-step instructions on how to operate the device's main functions. And the [Help] hard key on the device provides instructions and explanations for operation. User tutorials in Macromedia® Flash® format are also available and can be distributed through your network or corporate intranet for smooth deployment.

### REMOTE UI (USER INTERFACE)

The Color imageRUNNER C4080 Series can be accessed through a Web browser from any computer on the network. The Remote UI utility provides the ability to check the status of the device, track the progress of current jobs, monitor paper and toner levels, administer the Mail Box, and edit the Address Book. Instead of bulky manuals, device documentation is CD-based and features Search tools to find answers quickly and easily.



Easy Operation Guide and Tutorial CD

### Control Panel



### ...and for administrators

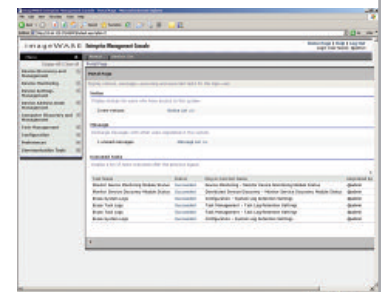
### FLEXIBLE USER ADMINISTRATION

Administrators have a choice of methods to control access and privileges to the Color imageRUNNER C4080 Series devices. Authentication schemes include Single Sign-On (SSO) using network accounts, Simple Device Log-In (SDL), and Department ID Mode with optional Control Card/Card Reader system. Using the Access Management System, administrators have powerful control over access to the Color imageRUNNER C4080 Series and its functions for even greater security and cost control—at both the user and group levels.

### COMPREHENSIVE DEVICE MANAGEMENT

Canon's imageWARE Enterprise Management Console (EMC) is a Web-based utility that facilitates centralized management of networked devices. Built upon an extensible framework, it enables remote management of device settings, discovery of new devices using automated tasks, and device error notifications via e-mail. Administrators can also easily replicate settings and Address Books across multiple devices through the Device Information Delivery Function (DIDF), as well as push-print drivers to PC-based desktop computers for rapid deployment.

### Help Key



imageWARE Enterprise Management Console



## SECURITY AND ACCESSIBILITY

### DEVICE ACCESS AND DATA SECURITY

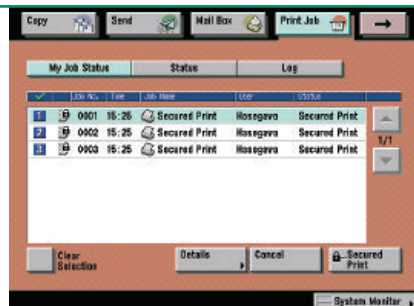
The Color imageRUNNER C4080 Series includes features to help guard against unauthorized access to the device and its data. In addition to user-level authentication, it can also restrict access from the network. The series also supports IPv6 for enhanced network infrastructure management. To protect your stored, scanned, and printed data, the HDD Data Erase option permanently removes deleted files by overwriting them up to three times. The HDD Data Encryption option provides additional security by encrypting data before it's written to the hard disk drive and has achieved Common Criteria (CC) certification.



Digital Signature PDF



Voice Operation Kit

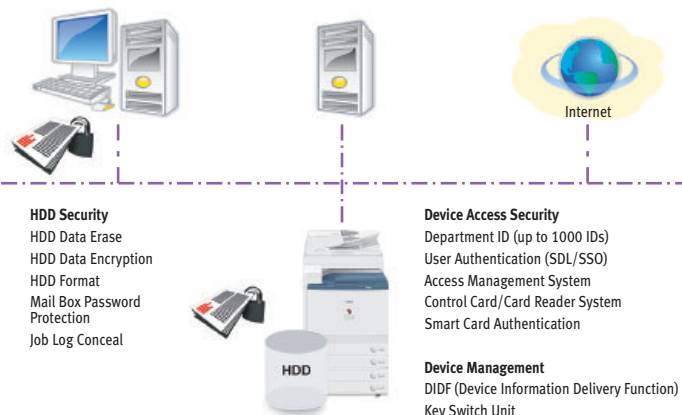


Encrypted Secured Print Screen

**Document Security**  
 Encrypted Secured Print  
 Watermark/Secure Watermark  
 Copy Set Numbering  
 Encrypted PDF  
 Digital Signature PDF  
 FAX Forwarding  
 FAX Destination Confirmation

**Mail Server Security**  
 POP Authentication before SMTP  
 SMTP Authentication

**Network Security**  
 MAC Address Filtering  
 IP Address Filtering  
 SSL Encryption  
 Network Application On/Off  
 USB Block  
 Destination Restriction



Device Management and Security Overview

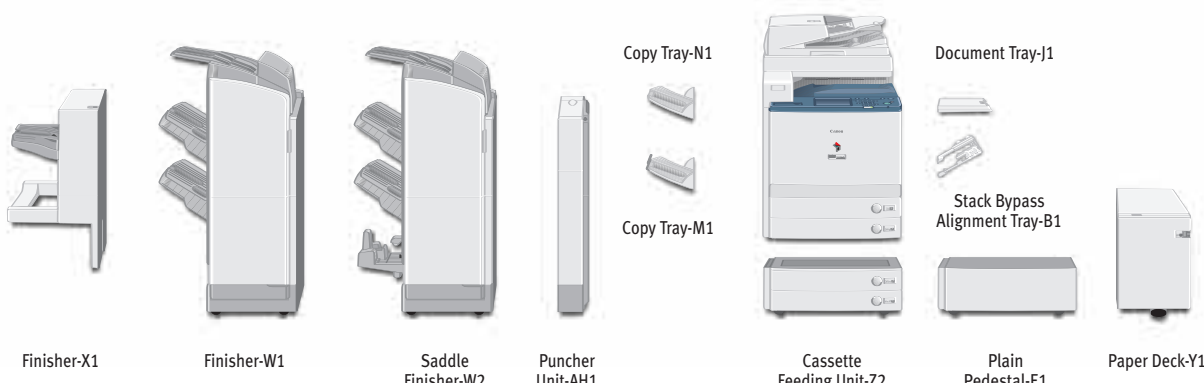
### DOCUMENT SECURITY

The Universal Send PDF Security Feature Set option prevents impersonation or interception of your documents. Digital Device Signature Mode and the optional Digital User Signature Mode provide verification of a document's source. Additionally, you can password-protect your documents with the Encrypted PDF feature and securely print them over the network using the Encrypted Secured Print feature.

### ACCESSIBILITY

Canon offers solutions that go even further to ensure access for every authorized user of the Color imageRUNNER C4080 Series devices. The device can be controlled with spoken commands using the Voice Operation Kit. The first Canon release of its kind for the U.S. market, the kit provides speech synthesis and voice recognition for individuals who are blind, or have poor vision or mobility/dexterity impairments.

# SPECIFICATIONS



<b>MAIN UNIT</b> <b>Type:</b> Color Digital Multifunction Imaging System <b>Copying Method:</b> Laser Dry Electrostatic Transfer <b>Developing System:</b> Dry Dual Component Developing System <b>Memory:</b> Standard 1GB RAM Maximum 1.5GB RAM 80GB <b>Hard Disk Drive:</b> <b>Network Interface Connections:</b> 10/100Base-TX (RJ-45) <b>Other Interface:</b> USB 2.0 (Device), USB 2.0 (Host) <b>First-Copy Time:</b> 9.6 Seconds (Color) 6.7 Seconds (B/W) <b>Warm-Up Time:</b> 4 Minutes and 30 Seconds After Powering On <b>Copy/Print Speed (B/W, Color):</b> Up to 40/36 ppm (Letter) <b>Scan Resolution:</b> 600 dpi x 600 dpi <b>Copy Resolution:</b> 600 dpi x 600 dpi <b>Engine Resolution:</b> 1200 dpi x 1200 dpi <b>Halftone:</b> 256 Gradations (Continuous-Tone) <b>Paper Sources</b> <b>Standard:</b> Dual 550-Sheet Paper Cassettes 100-Sheet Stack Bypass <b>Optional:</b> Dual 550-Sheet Paper Cassettes 2,700-Sheet Paper Deck <b>Paper Sizes</b> <b>Drawers:</b> 12" x 18", 11" x 17", Legal, Letter, Letter-R, Statement-R, Executive <b>Bypass:</b> 12" x 18", 11" x 17", Legal, Letter, Letter-R, Statement-R, Executive, 12-5/8" x 17-11/16", Irregular size (3-15/16" x 5-7/8" to 12-7/8" x 18") and Envelopes <b>Acceptable Paper Weight</b> <b>Drawers:</b> 17 lb. Bond to 110 lb. Index <b>Bypass:</b> 17 lb. Bond to 140 lb. Index <b>Duplexing:</b> Standard Automatic Trayless Duplexing (Executive to 12" x 18") <b>Image Reader:</b> Color Image Reader-F1 (Standard) <b>Acceptable Originals:</b> Sheet, Book, 3-Dimensional Objects (up to 4.4 lb.) <b>Max. Original Size:</b> 11" x 17" <b>Document Feeding Method:</b> Duplexing Automatic Document Feeder (Standard) <b>Acceptable Originals:</b> Statement to 11" x 17" <b>Paper Capacity:</b> 100 Sheets <b>Acceptable Paper Weight of Originals:</b> Simplex 11 to 32 lb. Bond (42 to 128 g/m <sup>2</sup> ) Duplex 13 to 32 lb. Bond (50 to 128 g/m <sup>2</sup> ) <b>Scan Speed:</b> 70 ipm (300 dpi) 51 ipm (600 dpi) <b>Dimensions (H x W x D):</b> 35" x 24-3/8" x 33-1/2" <b>Weight:</b> Approximately 295 lb. (134kg) <b>Power Requirements:</b> 120V AC, 60Hz, 15A <b>Power Consumption:</b> 1,665W		<b>Plug:</b> NEMA 5-15P <b>Toner (Estimated Yield):</b> Black: 26,000 Images @ 5% Coverage Color: 30,000 Images @ 5% Coverage <b>Copy Features</b> <b>Multiple Copies:</b> 1 to 999 <b>Max. Copy Reservation:</b> 10 Jobs <b>Color Mode:</b> Auto Color, Full Color, Black, Single Color, Two Colors <b>Copy Exposure:</b> Automatic or Manual (9 Levels) <b>Magnification</b> <b>Preset Reduction:</b> 25%, 50%, 64%, 73%, 78% <b>Preset Enlargement:</b> 121%, 129%, 200%, 400% <b>Zoom Mode:</b> 25% - 400% (1% Increments) <b>Mail Box Features</b> <b>Max. Mail Boxes Supported:</b> 100 User Inboxes, 1 Memory RX Inbox, 50 Confidential Fax Inboxes <b>Scan Feature</b> <b>Network TWAIN Scan:</b> Standard <b>Network Scan Utility:</b> Color Network ScanGear <b>Color Universal Send Feature (Standard)</b> <b>Color Mode:</b> Auto Color Select (Full Color/Gray Scale) Auto Color Select (Full Color, B/W) Full Color, Grayscale, B/W <b>Address Book Capacity:</b> Max. 1,800 Destinations (Includes 200 One-Touch Buttons) Max. 5 LDAP Servers <b>Sending Methods:</b> E-Mail, I-FAX, SMB, File Server (FTP, IPX, WebDAV), User Inbox, Super G3 Fax (Optional) <b>Communication Protocol</b> <b>File:</b> FTP (TCP/IP), SMB (TCP/IP), NCP (IPX), WebDAV <b>E-Mail/I-Fax:</b> SMTP, POP3, I-FAX (Simple, Full) <b>Data Format</b> <b>File, E-Mail:</b> TIFF, JPEG, PDF, PDF (Compact)* PDF (Trace & Smooth)*, PDF (OCR)* Encrypted PDF,** Digital Signature PDF (Device,** User***) <b>I-Fax:</b> B/W: TIFF (MH, MR, MMR) Color: TIFF (Profile-C)		<b>Supported PDL:</b> UFR II/PCL 5c/PCL 6 <b>Optional PDL Support:</b> PostScript 3 Emulation (PS Printer Kit-N1 *) <b>Printer Drivers</b> <b>UFR II:</b> Windows® (Windows 2000/XP/Server 2003, Windows Vista™) Citrix MetaFrame Macintosh® (OS 10.2.8 or Later) <b>PCL 5c:</b> Windows (Windows 98/Me/2000/XP/Server 2003, Windows Vista) Citrix MetaFrame <b>PCL 6:</b> Windows (Windows 98/Me/2000/XP/Server 2003, Windows Vista) Citrix MetaFrame <b>XPS:**</b> Windows Vista <b>PS3 (Optional):</b> Windows (Windows 98/Me/2000/XP/Server 2003, Windows Vista) Citrix MetaFrame Macintosh (OS 10.2.8 or Later) <b>imagePASS-H1</b> <b>Connectable Device:</b> Color imageRUNNER C4080 <b>CPU:</b> Celeron® M 1.5GHz <b>System:</b> System 8e <b>Memory:</b> 256MB (Std.), 512MB (Max.) <b>Hard Disk Drive:</b> 80GB <b>Interfaces (to LAN):</b> 10/100/1000Base-T (RJ-45) <b>Supported PDL:</b> Adobe® PostScript® 3, PCL 5c <b>Utility Software:</b> Remote Scan 5.3 Command WorkStation for Windows Command WorkStation for Mac 256MB RAM, Secure Erase v1.0, Hot Folders v2.0, Impose v2.6 <b>Options:</b> <b>ColorPASS-GX100</b> <b>Connectable Device:</b> Color imageRUNNER C4080 <b>CPU:</b> Intel® Pentium® 4, 3.2GHz <b>System:</b> System 8 <b>Memory:</b> 1GB (Std.), 2GB (Max.) <b>Hard Disk Drive:</b> 160GB <b>DVD-ROM:</b> Standard <b>Interfaces (to LAN):</b> 10/100/1000Base-T (RJ-45) <b>Supported PDL:</b> Adobe PostScript 3 <b>Options:</b> 1GB RAM, GA Package, GA Premium, Production Package, Impose v2.6, ACL Kit, Removable HDD <b>Cassette Feeding Unit-Z2</b> <b>Paper Sizes:</b> 12" x 18", 11" x 17", Legal, Letter, Letter-R, Statement-R, Executive <b>Paper Drawers Capacity:</b> 550 Sheets x 2 Cassettes [20 lb. Bond (80g/m <sup>2</sup> )] <b>Dimensions (H x W x D):</b> 12-1/4" x 24-3/8" x 27-3/4" <b>Paper Deck-Y1</b> <b>Paper Size:</b> Letter <b>Paper Deck Capacity:</b> 2,700 Sheets (20 lb. Bond 80g/m <sup>2</sup> ) <b>Dimensions (H x W x D):</b> 17" x 12-3/4" x 23-1/4"	
---	--	--	--	--	--

(Specifications are continued on back cover.)



### Finisher-X1

Number of Trays:	1 Tray
Paper Size	
Standard:	12" x 18", 11" x 17", Legal, Letter, Letter-R, Statement-R, Executive
Non-Standard Size:	(3-15/16" x 5-7/8" to 12-7/8" x 18")
Weight:	17 lb. Bond to 140 lb. Index
Paper Capacity Per Tray:	1,000 Sheets (Letter, Statement-R, Executive) 500 Sheets (12" x 18", 11" x 17", Legal, Letter-R)
Paper Capacity of Staple Mode:	1,000 Sheets/30 Sets (Letter, Executive) 500 Sheets/30 Sets (11" x 17", Legal, Letter-R)
Max. Stapling Capacity	
Letter, Executive:	50 Sheets (17 lb. to 20 lb. Bond) 30 Sheets (20 lb. to 28 lb. Bond) 2 Sheets (28 lb. Bond to 140 lb. Index)
11" x 17", Legal, Letter-R:	30 Sheets (17 lb. to 20 lb. Bond) 20 Sheets (20 lb. to 28 lb. Bond) 2 Sheets (28 lb. Bond to 140 lb. Index)
Staple Mode:	Corner (11" x 17", Legal, Letter, Letter-R, Executive)
Dimensions (H x W x D):	28-5/8" x 16-1/4" x 24"

### Finisher-W1/Saddle Finisher-W2

Number of Trays:	3 Trays
Paper Size	
Standard:	12" x 18", 11" x 17", Legal, Letter, Letter-R, Statement-R, Executive
Non-Standard Size:	(3-15/16" x 5-7/8" to 12-7/8" x 18")
Paper Weight:	17 lb. Bond to 140 lb. Index
Paper Capacity Per Tray	
Non-Collating Tray:	250 Sheets (Letter, Statement-R, Executive) 125 Sheets (12" x 18", 11" x 17", Legal, Letter-R)
Upper Tray:	1,300 Sheets (Letter, Statement-R, Executive)

Lower Tray:	650 Sheets (12" x 18", 11" x 17", Legal, Letter-R) 2,450 Sheets (Letter) 1,700 Sheets (Statement-R, Executive) 650 Sheets (12" x 18", 11" x 17", Legal, Letter-R)
Paper Capacity of Staple Mode	
Upper/Lower Tray:	1,300 Sheets/100 Sets (Letter, Executive) 650 Sheets/50 Sets (11" x 17", Legal, Letter-R, Staple with different paper sizes)
Max. Stapling Capacity	
Letter, Executive:	50 Sheets (17 lb. to 20 lb. Bond) 30 Sheets (20 lb. to 28 lb. Bond) 2 Sheets (28 lb. Bond to 140 lb. Index)
11" x 17", Legal, Letter-R:	30 Sheets (17 lb. to 20 lb. Bond) 20 Sheets (20 lb. to 28 lb. Bond) 2 Sheets (28 lb. Bond to 140 lb. Index)
Staple Mode:	Corner (11" x 17", Legal, Letter, Letter-R, Executive) Double (11" x 17", Legal, Letter, Letter-R, Executive)
Saddle-Stitching†	
Acceptable Paper Sizes:	12" x 18", 11" x 17", Legal, Letter-R
Saddle Stitch Capacity:	15 Sheets (17 lb. to 20 lb. Bond) 10 Sheets (20 lb. to 28 lb. Bond)
Tray Capacity:	25 Sets (1 to 5 Sheets) 15 Sets (6 to 10 Sheets) 10 Sets (11 to 15 Sheets)
Folding:	V-Fold
Dimensions (H x W x D):	46-1/4" x 26-3/4" x 25-7/8"
<b>Puncher Unit-AH1††</b>	
Paper Size:	11" x 17", Legal, Letter, Letter-R
Max. Paper Weight:	17 lb. Bond to 140 lb. Index
Punch Type:	3 Holes (Letter, 11" x 17") 2 Holes (Legal, Letter-R)
Punch Waste Tray Capacity:	When approximately 3,000 Sheets of paper have been punched
Dimensions (H x W x D):	32-3/4" x 4-1/4" x 24-1/2"

### Other Optional Accessories

- Encrypted Secured Print Software-C1†††
- Barcode Printing Kit-A1†††
- Web Access Software-E1†
- Universal Send PDF Advanced Feature Set-A1††
- Universal Send PDF Security Feature Set-A1††
- Digital User Signature PDF Kit-A1
- Secure Watermark-A1\*
- Super G3 Fax Board-V2
- Super G3 Multi-Line Fax Board-H2
- imageRUNNER 512MB Expansion RAM-C1
- HDD Encryption Kit-B1
- HDD Erase Kit-A1
- Voice Guidance Kit-A2\*
- Voice Operation Kit-A1\*
- Remote Operator's Software Kit-A2
- Plain Pedestal-E1
- Document Tray-J1
- Copy Tray-M1
- Copy Tray-N1
- Stack Bypass Alignment Tray-B1
- Card Reader-D1
- Key Switch Unit-A2
- Braille Label Kit-A1
- ADF Access Handle-A1
- Stamp Unit-A1
- eCopy Suite
- imageWARE™ Suite
- Access Management System Kit-A1
- Workflow Composer-B1

### Footnotes:

- \* When configured on C4080, requires Universal Send PDF Advanced Feature Set-A1
- \*\* When configured on the C4080, requires Universal Send PDF Security Feature Set-A1
- \*\*\* Requires Digital User Signature Kit-A1
- † Requires iR 512MB Expansion RAM-C1
- †† Check with your Authorized Canon Dealer for availability.
- † Available with Saddle Finisher-W2 Only
- ††† Puncher Unit-AH1 can only be installed with either the Finisher-W1 or Saddle Finisher-W2.
- ††† Requires UFR II/PCL Printer Kit-N2
- † When configured on the C4080, requires UFR II/PCL Printer Kit-N2 if printing Web pages; requires PS Printer Kit-N1 on C4080/C4080i if printing PDF files
- †† Standard on C4080i
- Voice Guidance Kit and Voice Operation Kit cannot be installed together.

**Canon**  
image*ANYWARE*

Microsoft, Windows, and Windows NT are registered trademarks and Windows Vista is a trademark of Microsoft Corporation in the United States and/or other countries. Macintosh is a trademark of Apple Computer, Inc. Adobe, Acrobat, and PostScript are registered trademarks of Adobe Systems Incorporated in the United States and/or other countries. Intel, Celeron, and Pentium are registered trademarks of Intel Corporation. CANON, IMAGERUNNER, and MEAP are registered trademarks of Canon Inc. in the United States and may also be registered trademarks or trademarks in other countries. IMAGEWARE is a registered trademark of Canon U.S.A., Inc. in the United States and is a trademark of Canon Inc. in certain countries. IMAGEANYWARE is a trademark of Canon. All referenced product names and other marks are trademarks of their respective owners. Specifications and availability subject to change without notice. ©2007 Canon U.S.A., Inc. All rights reserved.

Federal Law prohibits copying of certain documents. Violators may be subject to penalties. We suggest that you check with your own legal counsel. Canon U.S.A., Inc. and Canon Canada, Inc. intend to cooperate with Law Enforcement Agencies in connection with claims of unauthorized copying.



0098W250  
0707-C4080-30M-LIS



PRINTED ON RECYCLED  
PAPER IN THE U.S.A.



1-800-OK-CANON  
www.usa.canon.com

Canon U.S.A., Inc.  
One Canon Plaza  
Lake Success, NY 11042