

Canon



CORPORATE SOLUTIONS



**Color
imageRUNNER®**
C 5 1 8 5 SERIES

meap
POWERED BY

CORPORATE SOLUTIONS

INTRODUCING A NEW ERA OF COLOR— THE CANON COLOR imageRUNNER C5185 SERIES

Unleash power, speed, flexibility, and connectivity in your office

With robust functionality, advanced print engine technology, superior paper-handling, and professional finishing options, the Color imageRUNNER C5185 Series models are the ideal multifunction devices for your office.

The Color imageRUNNER C5185 Series delivers output at speeds of up to 51 pages per minute (letter) in both black and white and brilliant color. Fast print speeds and warm-up times are achieved through Canon's Twin-Belt Fusing Technology. And at true 1200 dpi, every word will appear with absolute clarity with the highly precise four-beam laser scanner.

For fast and reliable scanning, the Color imageRUNNER C5185 Series includes a standard 100-sheet Single-Pass Duplexing Automatic Document Feeder (DADF) that's capable of scanning images in full color at up to 600 dpi. The new DADF boosts productivity by simultaneously scanning both sides of duplex documents at up to 100 impressions per minute at 300 dpi.

Two versions of the Color imageRUNNER C5185 Series are available—an "i" model and a "Base" model. The "i" model, designed for general office environments, is bundled with features providing out-of-the-box business productivity. The "Base" model is highly customizable and offers a selection of options to best fit demanding color environments.

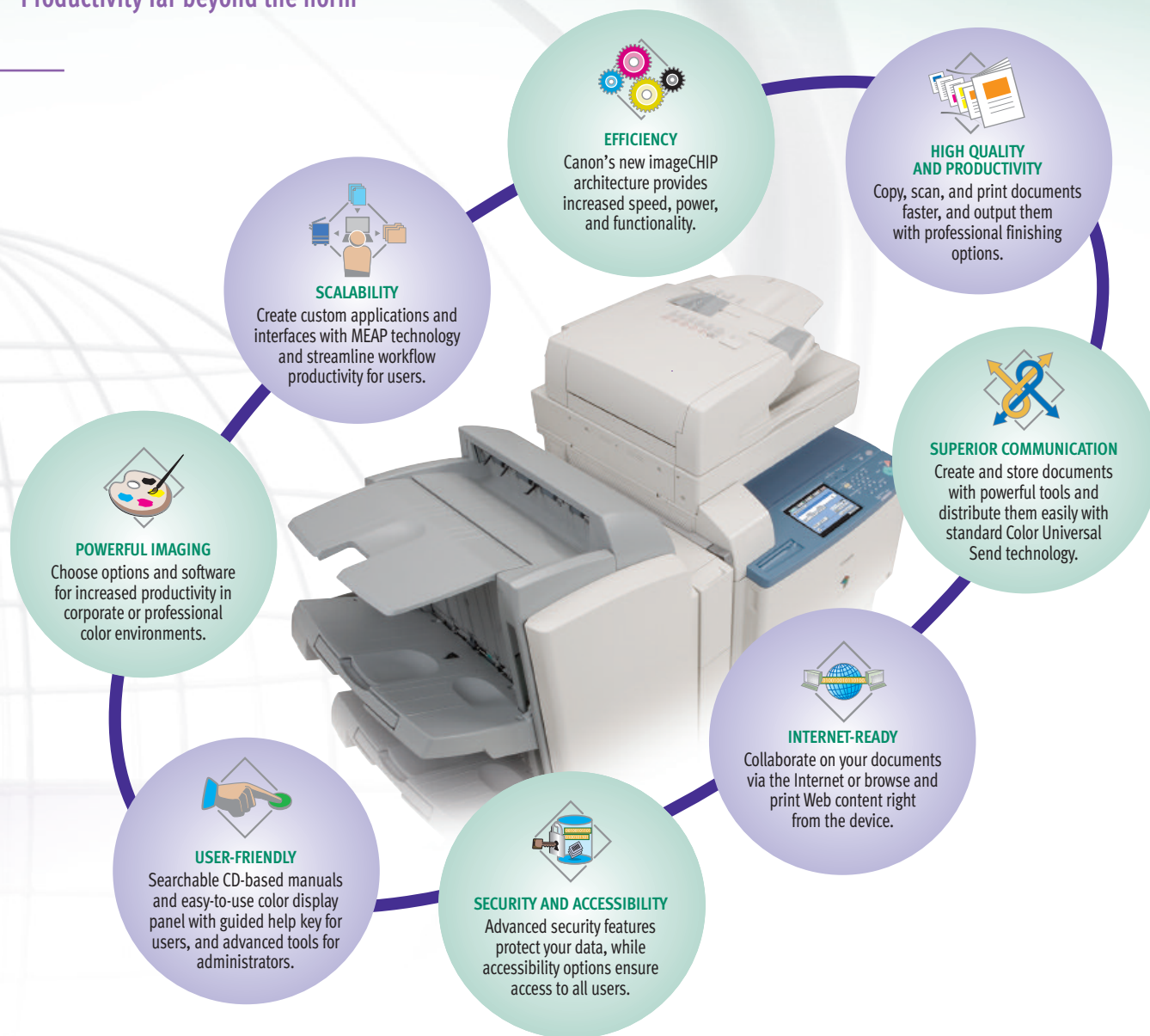
The Color imageRUNNER C5185 Series provides memory capacity of up to 1.5GB, an 80GB hard drive, and Canon's innovative MEAP® (Multifunctional Embedded Application Platform) technology for customized workflows. With high-capacity finishing options, professional output is available for any project.

When it comes to connectivity, the Color imageRUNNER C5185 Series enables efficient document distribution with Canon's Color Universal Send technology. Standard on all models, it provides comprehensive dissemination of information simultaneously to multiple locations across the hall or around the globe.



COLOR imageRUNNER C5185 SERIES OVERVIEW

Productivity far beyond the norm



Function	Color imageRUNNER C5185	Color imageRUNNER C5185i
Copy	Standard	
Mail Box	Standard	
Print	Optional:* UFR II, PCL, PostScript Emulation,** Adobe® PostScript® 3™	Standard: UFR II, PCL Optional: PostScript Emulation**
Scan	Standard: Color Network ScanGear	
Color Universal Send	Standard: Color Universal Send	
	Optional: Universal Send PDF Advanced Feature Set	Standard: Universal Send PDF Advanced Feature Set
	Optional: Universal Send PDF Security Feature Set	Standard: Universal Send PDF Security Feature Set
Super G3 Fax	Optional: Single-Line or Multi-Line	
Web Access	Optional	
MEAP	Standard	

* Choose one of three print controller options: UFR II/PCL Printer Kit-N2, imagePASS-H1, or ColorPASS-GX100.

** PS Printer Kit-N2 option requires the UFR II/PCL Printer Kit-N2; also requires 512MB RAM.



THE ANATOMY OF AN EFFICIENT PERFORMER

Canon imageCHIP System Architecture

- imageCHIP architecture provides more speed and power for greater productivity
- Up to 1.5GB RAM and 80GB HDD
- Dedicated dual processor design
- Mail Box: local archival solution
- Remote UI device management



Robust Speed

- Up to 100-ipm single-pass double-sided scanning
- Standard 100-sheet Duplexing Automatic Feeder
- 51 ppm printing (B/W and color)

Reliable Consumables and Supplies

- Durable Canon OPC Drum
- Easy-to-replace toner cartridges
- Oil-free color S-toners



Accessibility Options

- Voice Operation Kit
- Remote Operator's Software Kit
- ADF Access Handle
- Braille Label Kit



Advanced Finishing Options

- Three types of finishers
- Corner, double, saddle-stitch
 - Extensive stacking capacity
- Hole-punching
- Two or three holes

Superior Paper-Handling

- Up to 5,000-sheet paper capacity
- 100-sheet Bypass Tray; Alignment Tray Option
- Up to 140 lb. Index media weights
- Up to 12" x 18" media sizes

Finisher-X1



Finisher-W1



Saddle
Finisher-W2



Puncher
Unit-AH1



Cassette
Feeding Unit-Z2



Plain
Pedestal-E2



Paper Deck-Y1





HIGH QUALITY AND PRODUCTIVITY

Uncompromising business performance

NEW-GENERATION IMAGE PROCESSING

The Color imageRUNNER C5185 Series is powered by Canon's evolutionary imageCHIP system architecture. This not only enables simultaneous copying, printing, scanning, sending, and faxing, but it will change the way you think about using color in your office.

DIGITAL DYNAMICS

Adding digital data to copies and prints is easy and powerful. Create ad hoc watermarks, select preset stamps, add page and copy set numbering, and/or date stamping to any output with control over size, position, colors, and density. You can also embed secure watermarks that appear when copies are made to help prevent security leaks of confidential information.

Secure Watermark



Original document with hidden text and background color

Hidden text appears on copies that are made

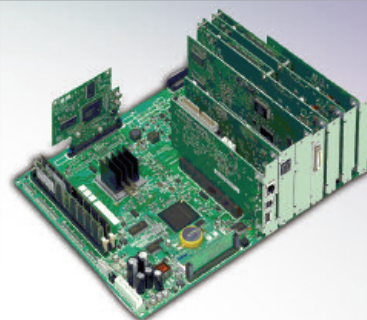
THE PERFECT FINISHING TOUCHES

The Color imageRUNNER C5185 Series offers professional finishing options that collate, staple, hole-punch, or saddle-stitch to create impressive documents efficiently. And with Automatic Creep Correction, each page in your large booklets will be perfectly positioned.

Saddle Finisher-W2



imageCHIP System Architecture



COMPLEX JOBS MADE SIMPLE

The Color imageRUNNER C5185 Series makes the production of complicated documents manageable. Users can combine different sets of documents into one with Job Block Combination at the device. Each set can be configured to run with unique settings, such as paper type, finishing, color, and more, then reproduced or stored as a new document in a Mail Box. From the desktop, individual or groups of pages in documents can be configured with the new Exceptional Settings tab* in the print driver to control output settings, such as media type, paper size, input tray, and finishing options.

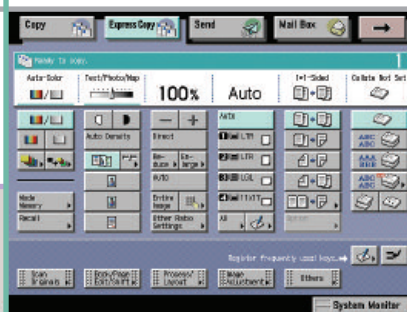
BRILLIANT BUSINESS COLOR

For general office environments, the Color imageRUNNER C5185 Series efficiently tackles print tasks for Microsoft® Office applications. It supports Canon's UFR II (Ultra Fast Rendering), PCL, and XPS,** as well as an option for PostScript 3 emulation.

FASTER COPYING

Copy operations are greatly simplified through the choice of two user interfaces. The standard copy display simplifies operations for novice users, while an Express Copy menu provides advanced users quick access to various copying modes on a single screen.

Express Copy Screen



* Requires PS Printer Kit-N2 option.

** Please check with your Authorized Canon Dealer for availability.

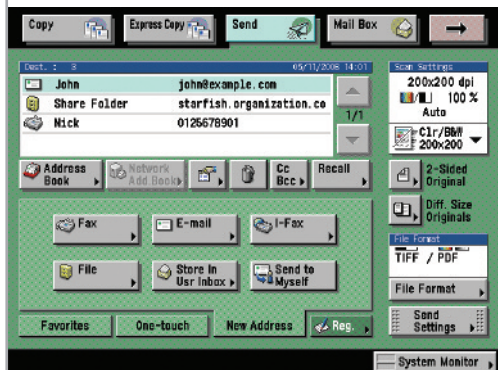


SUPERIOR COMMUNICATION

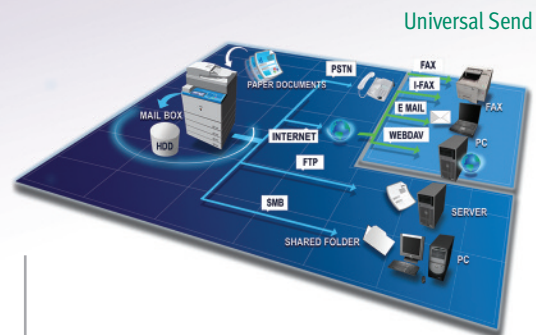
Enhance your digital world with Color Universal Send

With Canon's proprietary Universal Send technology, the Color imageRUNNER C5185 Series enables you to distribute scanned documents to multiple network destinations—such as e-mail and Internet fax addresses, local Mail Boxes, fax, network folders, and document management systems—in one simple operation. Quickly and easily send documents to user addresses in a local Address Book, look up users from multiple LDAP servers on your network, or manually enter a destination. When Single Sign-On (SSO) or Simple Device Log-in (SDL) authentication modes are used, a new time-saving feature enables you to send documents to yourself in a single click.

Color Universal Send offers powerful options to master creation, distribution, and archiving of your documents. Universal Send PDF Advanced Features (standard on the "i" model) provide additional functionality such as PDF High Compression, Trace & Smooth PDF, and Searchable PDF modes.



Send Main Screen



FILE SIZE COMPARISON

Original: Letter-Sized Hard Copy (Color Graphics with Text)

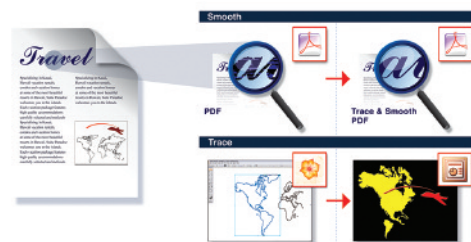
MarNij Manors	MarNij Manors	MarNij Manors
Canon's PDF (Compact) 300-dpi Color Scan File Size: 150 KB	PDF File Format 300-dpi Color Scan File Size: 2 MB	PDF File Format 300-dpi B/W Scan File Size: 390 KB

PDF High Compression Mode

PDF HIGH COMPRESSION TECHNOLOGY

To reduce network bandwidth requirements when sending color documents, Canon's proprietary PDF High Compression Mode can significantly reduce the size of PDF files. And with Canon's exclusive Trace & Smooth PDF feature, text in PDF files can be converted to outlines for sharper edges and increased readability. The outline data can also be manipulated in Adobe Illustrator® to create elements for other documents.

Trace & Smooth PDF



CREATING SEARCHABLE PDF DOCUMENTS

After scanning for PDF creation, the text is then embedded within the file for extraction or keyword searches with the Searchable PDF feature. This allows you to easily scan and convert scanned documents into your electronic workflow.

HIGH-VOLUME FAX CAPABILITY

The Color imageRUNNER C5185 Series supports the option to add a single- or multi-line Super G3 fax module to further extend the capabilities of Color Universal Send. Incoming faxes can also be automatically routed to other devices, destinations, or users with the Job Forwarding feature for superior workflow management.

ADVANCED WORKGROUP COLLABORATION

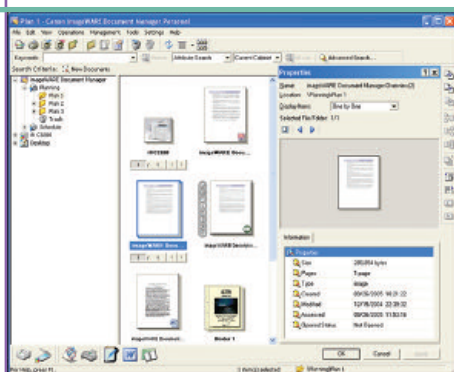
The Color imageRUNNER C5185 Series includes internal Mail Boxes for document storage and print-on-demand applications. Documents can be combined and printed as a single job or sent to multiple destinations in a variety of formats. For files that are too large for e-mail or require a large distribution list, the URL Send feature can e-mail a link to notify recipients that they can remotely preview via PC and, if necessary, print from the device.



Mail Box Screen

DESKTOP INTEGRATION

The Color imageRUNNER C5185 Series is designed to work seamlessly with Canon's imageWARE™ Document Manager Personal Version 4 as a total end-to-end document solution. You can capture, archive, retrieve, and manipulate documents within the imageRUNNER devices' Mail Boxes right from your desktop computer, seamlessly integrating your workspace with the device.



imageWARE Document Manager Personal Version 4



INTERNET-READY

Maximize the power of the Web

The Color imageRUNNER C5185 Series provides more ways to share information with the world beyond your office than ever before.

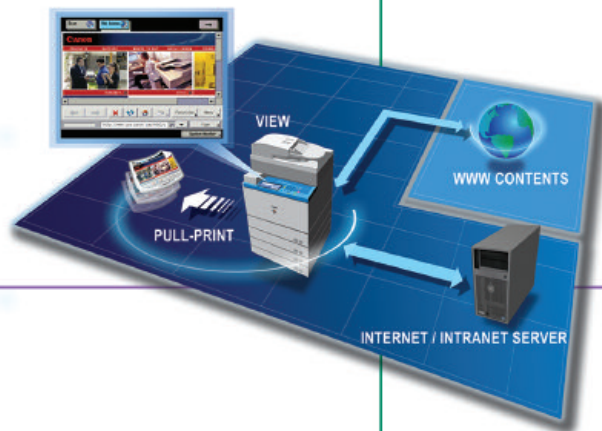
WEB BROWSING AND PRINTING

With the industry's first Web Access Software option, you can browse the Web or corporate intranets directly from the device's color touch-panel. The Web Access function enables you to print Web pages or PDF files from the Internet or your network, even when you don't have access to a computer.*

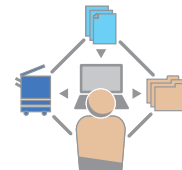
WEB-BASED DOCUMENT COLLABORATION

Color Universal Send supports the Web-based Distributed Authoring and Versioning (WebDAV) protocol, enabling you to securely send documents to a shared storage service over the Internet. Collaborate on documents with others, whether they're in the office, on the road, or at home—for increased productivity.

Web Access Software



* When configured on the "Base" model, requires UFR II/PCL Printer Kit-N2 if printing Web pages; requires PS Printer Kit-N2 on "Base" and "i" models if printing PDF files.



SCALABILITY

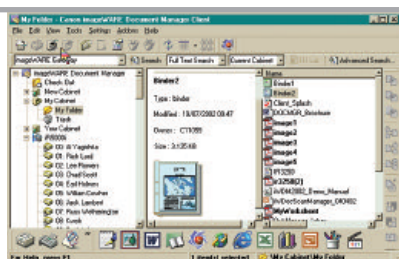
Solutions that evolve with your business

As your business grows, the Color imageRUNNER C5185 Series will continue to provide value with features and options designed to extend your capabilities.

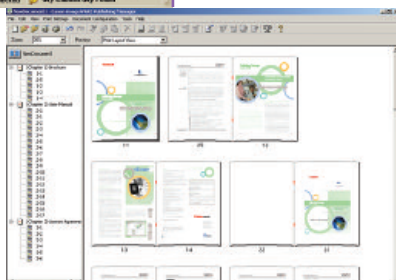
OPEN PLATFORM INTEGRATION

With Canon's Java-based MEAP architecture, you can design custom interfaces and applications to run on the Color imageRUNNER C5185 Series' color touch-panel. MEAP applications can be easily created to support customized workflows for the seamless integration of your business processes.

imageWARE Document Manager



imageWARE Publishing Manager



eCopy ShareScan OP

DOCUMENT ARCHIVAL

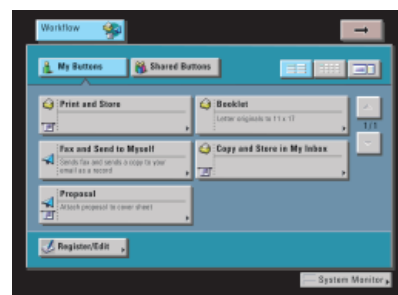
Canon offers industry-leading solutions for effective archiving and retrieval of critical business documents and records. Canon's optional imageWARE Document Manager software can efficiently store vast amounts of information in a centralized electronic repository for easy, secure, and effective document management.

POWERFUL DOCUMENT CREATION

Canon's imageWARE Publishing Manager software option provides powerful desktop tools to produce professional documents through a simple drag-and-drop interface. Documents can contain contents from many different sources and applications and provide access to a number of editing, imposition, and finishing capabilities.

OPERATIONAL EFFICIENCY

Breeze through complex tasks and help reduce operator mistakes using the new Workflow Composer option. Workflow Composer enables users to configure one button to perform multiple actions, such as copying, sending, and storing at the device in a single step. For even greater convenience, workflow buttons can also be created and edited from the desktop.



Workflow Composer Screen



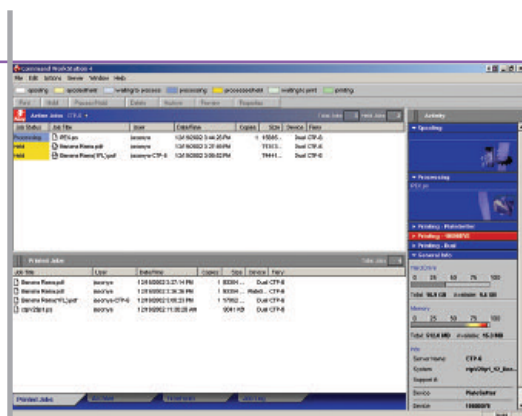
POWERFUL IMAGING

Flexible color productivity for demanding environments

Canon offers flexible print controller options developed for the Color imageRUNNER C5185 “Base” model. The ColorPASS-GX100 and imagePASS-H1 controllers increase productivity and color accuracy for corporate and professional color environments.

imagePASS-H1 CONTROLLER

The imagePASS-H1 is a high-performance embedded controller designed to handle color-intensive multi-user environments. Featuring a dedicated Intel® Celeron® M 1.5GHz processor, the imagePASS-H1 provides improved color matching, genuine Adobe PostScript 3 support, and PCL.



EFI Utility Screen

ColorPASS-GX100



Stand and monitor shown are not included with the purchase of the ColorPASS controller.

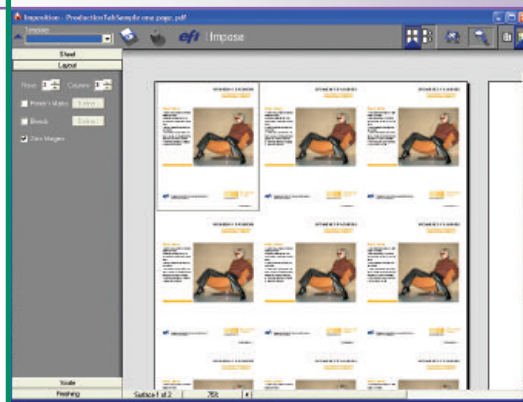
ColorPASS-GX100 CONTROLLER

The ColorPASS-GX100 is a powerful external server which caters to graphic-intensive users and production environments. Driven by an Intel Pentium® 4 3.2GHz processor, the ColorPASS-GX100 controller supports demanding color image and high-volume processing.

INDUSTRY-LEADING TOOLS

The ColorPASS-GX100 and the imagePASS-H1 are further enhanced by the latest system software 8/8e, which improves overall productivity and functionality. These enhancements provide total control of workflow and image quality on the Color imageRUNNER C5185 “Base” model—from mastering document imposition to better color accuracy. Both controllers are Variable Data Printing (VDP) ready, and support a variety of VDP languages including FreeForm, FreeForm II, and PPML.*

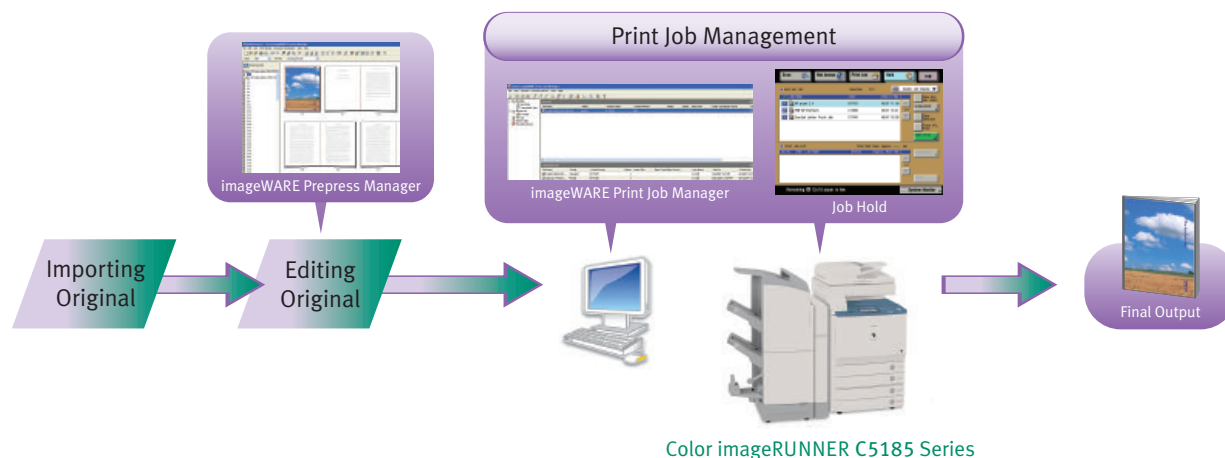
Impose



JOB DEFINITION FORMAT WORKFLOWS

The Color imageRUNNER C5185 Series supports Job Definition Format (JDF) for enhanced print workflows in production environments. When used together with Canon’s imageWARE Prepress Manager, and imageWARE Print Job Manager, documents can be submitted as a JDF file format with customized pre-press, printing, or finishing settings.** These JDF files can be printed or submitted into the Hold Queue of the Color imageRUNNER C5185 Series devices and then operators can easily manage, Preview, Job Ticket Edit, and Sample Print multiple queued jobs from the device.

JDF Workflow



* ColorPASS controller only

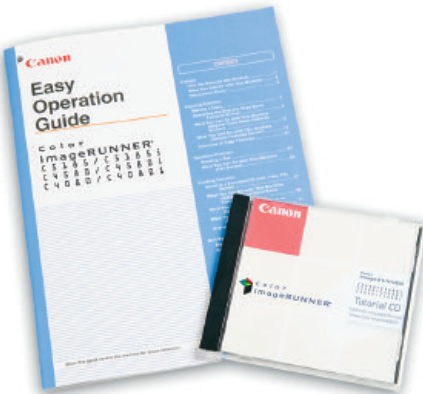
** Requires PS Printer Kit-N2. Check with your Canon Authorized Dealer for availability of imageWARE Prepress Manager and imageWARE Print Job Manager.



USER-FRIENDLY

Simplicity for users

The Color imageRUNNER C5185 Series is designed to make you more productive with an easy-to-read, full-color touch-panel, interactive help menus, and more useful documentation and tutorials. Remote tools enable you to monitor and perform operations on the device from any computer on the network.



Easy Operation Guide and Tutorial CD

REMOTE UI (USER INTERFACE)

The Color imageRUNNER C5185 Series can be accessed through a Web browser from any computer on the network. The Remote UI utility provides the ability to check the status of the device, track the progress of current jobs, monitor paper and toner levels, administer the Mail Box, and edit the Address Book.

Control Panel



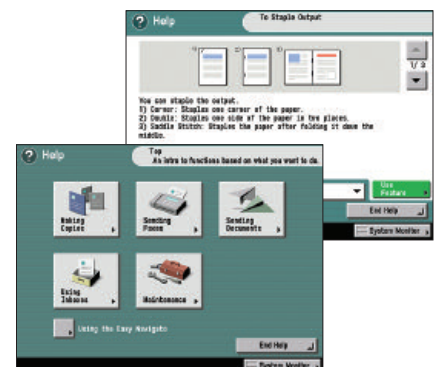
SUPPORT TOOLS FOR OPERATORS

Whether you're a beginner or an advanced user, the Color imageRUNNER C5185 Series is easy to navigate. An easy operation guide provides step-by-step instructions on how to operate the device's main functions. And the [Help] hard key on the device provides instructions and explanations for operation. Instead of bulky manuals, device documentation is CD-based and features search tools to find answers quickly and easily. User tutorials in Macromedia Flash format are also available and can be distributed through your network or corporate intranet for smooth deployment.

Electronic User Manuals



Help Key



...and for administrators

The Color imageRUNNER C5185 Series includes features that control user access and privileges to the device, as well as the ability to facilitate the management of one or many devices throughout your enterprise.

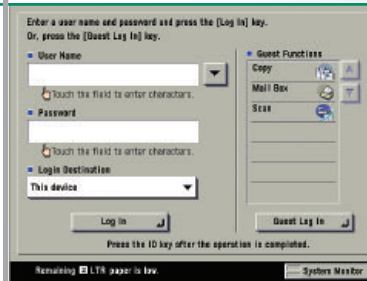
FLEXIBLE USER ADMINISTRATION

Administrators have a choice of methods to control access and privileges to the Color imageRUNNER C5185 Series devices. Authentication schemes include Single Sign-On (SSO) using network accounts, Simple Device Log-In (SDL), and Department ID Mode with optional Control Card/Card Reader system. Using the Access Management System, administrators have powerful control over access to the Color imageRUNNER C5185 Series and its functions for even greater security and cost control—at both the user and group levels.

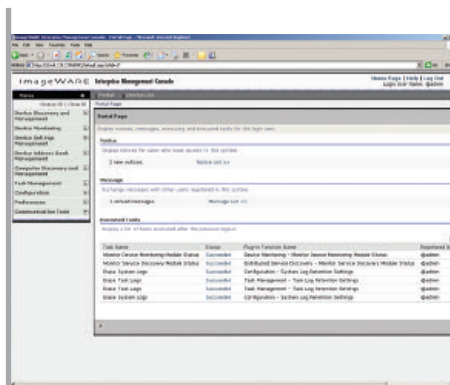
COMPREHENSIVE DEVICE MANAGEMENT

Canon's imageWARE Enterprise Management Console (EMC) is a Web-based utility that facilitates centralized management of networked devices. Built upon an extensible framework, it enables remote management of device settings, discovery of new devices using automated tasks, and device error notifications via e-mail. Administrators can also easily replicate settings and Address Books across multiple devices through the Device Information Delivery Function (DIDF), as well as push-print drivers to PC-based desktop computers for rapid deployment.

Access Management System Screen



Card Reader



imageWARE Enterprise Management Console



SECURITY AND ACCESSIBILITY

DEVICE ACCESS AND DATA SECURITY

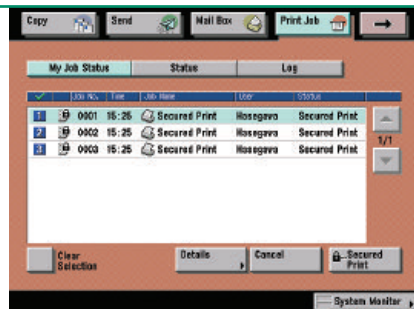
The Color imageRUNNER C5185 Series includes features to help guard against unauthorized access to the device and its data. In addition to user-level authentication, it can also restrict access from the network. The Color imageRUNNER C5185 Series also supports IPv6 for enhanced network infrastructure management. To protect your stored, scanned, and printed data, the HDD Data Erase option permanently removes deleted files by overwriting them up to three times. The HDD Data Encryption option provides additional security by encrypting data before it's written to the hard disk drive and has achieved Common Criteria (CC) certification.



Digital Signature PDF



Voice Operation Kit

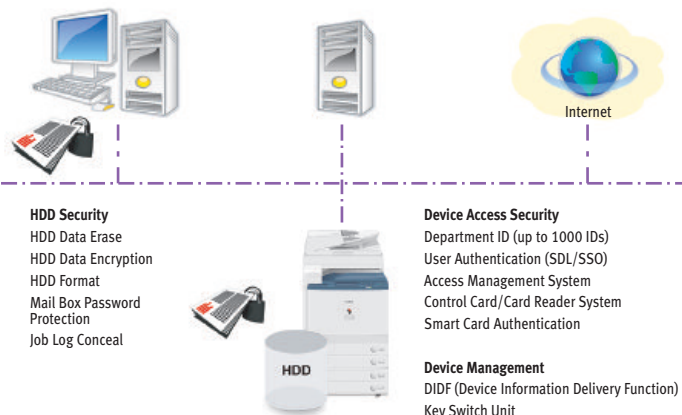


Encrypted Secured Print Screen

Document Security
 Encrypted Secured Print
 Watermark/Secure Watermark
 Copy Set Numbering
 Encrypted PDF
 Digital Signature PDF
 FAX Forwarding
 FAX Destination Confirmation

Mail Server Security
 POP Authentication before SMTP
 SMTP Authentication

Network Security
 MAC Address Filtering
 IP Address Filtering
 SSL Encryption
 Network Application On/Off
 USB Block
 Destination Restriction



Device Management and Security Overview

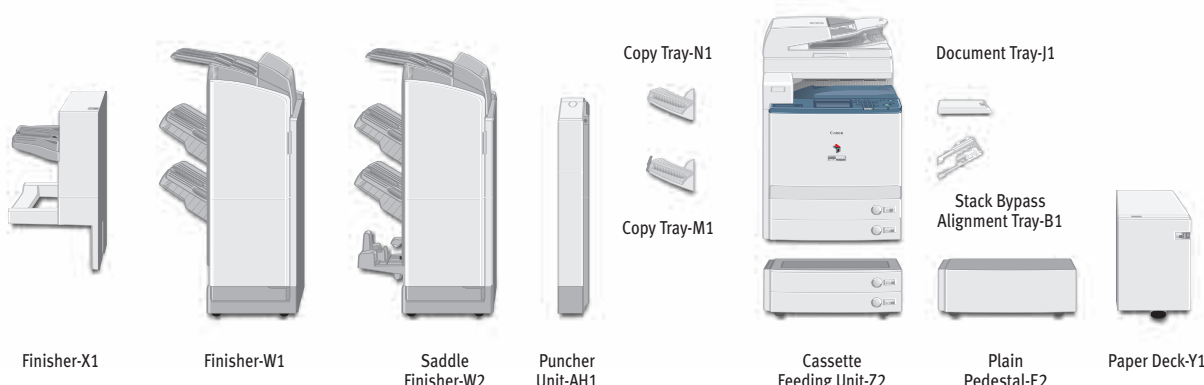
DOCUMENT SECURITY

The Universal Send PDF Security Feature Set option prevents impersonation or interception of your documents. Digital Device Signature Mode and the optional Digital User Signature Mode provide verification of a document's source. Additionally, you can password-protect your documents with the Encrypted PDF feature and securely print them over the network using the Encrypted Secured Print feature.

ACCESSIBILITY

Canon offers solutions that go even further to ensure access for every authorized user of the Color imageRUNNER C5185 Series devices. The device can be controlled with spoken commands using the Voice Operation Kit. The first Canon release of its kind for the U.S. market, the kit provides speech synthesis and voice recognition for individuals who are blind, or have poor vision or mobility/dexterity impairments.

SPECIFICATIONS



MAIN UNIT Type: Color Digital Multifunction Imaging System Copying Method: Laser Dry Electrostatic Transfer Developing System: Dry Dual Component Developing System Memory: Standard 1GB RAM Maximum 1.5GB RAM 80GB Hard Disk Drive: Network Interface Connections: 10/100Base-TX (RJ-45) Other Interface: USB 2.0 (Device), USB 2.0 (Host) First-Copy Time: 8.0 Seconds (Color) 6.2 Seconds (B/W) Warm-Up Time: 4 Minutes After Powering On Copy/Print Speed (B/W, Color): Up to 51/51 ppm (Letter) Scan Resolution: 600 dpi x 600 dpi Copy Resolution: 600 dpi x 600 dpi Engine Resolution: 1200 dpi x 1200 dpi Halftone: 256 Gradations (Continuous-Tone) Paper Sources Standard: Dual 550-Sheet Paper Cassettes 100-Sheet Stack Bypass Optional: Dual 550-Sheet Paper Cassettes 2,700-Sheet Paper Deck Paper Sizes Drawers: 12" x 18", 11" x 17", Legal, Letter, Letter-R, Statement-R, Executive Bypass: 12" x 18", 11" x 17", Legal, Letter, Letter-R, Statement-R, Executive, 12-5/8" x 17-11/16", Irregular size (3-15/16" x 5-7/8" to 12-7/8" x 18") and Envelopes Acceptable Paper Weight Drawers: 17 lb. Bond to 110 lb. Index Bypass: 17 lb. Bond to 140 lb. Index Duplexing: Standard Automatic Trayless Duplexing (Executive to 12" x 18") Image Reader: Duplex Color Image Reader-G1 (Standard) Acceptable Originals: Sheet, Book, 3-Dimensional Objects (up to 4.4 lb.) Max. Original Size: 11" x 17" Document Feeding Method: Single-Pass Duplexing Automatic Document Feeder (Standard) Acceptable Originals: Statement to 11" x 17" Paper Capacity: 100 Sheets Acceptable Paper Weight of Originals: Simplex 11 to 32 lb. Bond (42 to 128 g/m ²) Duplex 13 to 32 lb. Bond (50 to 128 g/m ²) Scan Speed (Letter) Simplex: 70 ipm (300 dpi)/51 ipm (600 dpi) Duplex: 100 ipm (300 dpi)/51 ipm (600 dpi) Dimensions (H x W x D): 35-5/8" x 24-3/8" x 33-1/2" Weight: Approximately 309 lb. (140.2kg) Power Requirements: 120V AC, 60Hz, 20A		Power Consumption: 2,100W Plug: NEMA 5-20P Toner (Estimated Yield): Black: 27,000 Images @ 5% Coverage Color: 36,000 Images @ 5% Coverage Copy Features Multiple Copies: 1 to 999 Max. Copy Reservation: 10 Jobs Color Mode: Auto Color, Full Color, Black, Single Color, Two Colors Copy Exposure: Automatic or Manual (9 Levels) Magnification Preset Reduction: 25%, 50%, 64%, 73%, 78% Preset Enlargement: 121%, 129%, 200%, 400% Zoom Mode: 25% - 400% (1% Increments) Mail Box Features Max. Mail Boxes Supported: 100 User Inboxes, 1 Memory RX Inbox, 50 Confidential Fax Inboxes Scan Feature Network TWAIN Scan: Standard Network Scan Utility: Color Network ScanGear Color Universal Send Feature (Standard) Color Mode: Auto Color Select (Full Color/Gray Scale) Auto Color Select (Full Color, B/W) Full Color, Grayscale, B/W Address Book Capacity: Max. 1,800 Destinations (Includes 200 One-Touch Buttons) Max. 5 LDAP Servers Sending Methods: E-Mail, I-FAX, SMB, File Server (FTP, IPX, WebDAV), User Inbox, Super G3 Fax (Optional) Communication Protocol File: FTP (TCP/IP), SMB (TCP/IP), NCP (IPX), WebDAV E-Mail/I-Fax: SMTP, POP3, I-FAX (Simple, Full) Data Format File, E-Mail: TIFF, JPEG, PDF, PDF (Compact)*, PDF (Trace & Smooth)*, PDF (OCR)*, Encrypted PDF,** Digital Signature PDF (Device,** User***) I-Fax: B/W: TIFF (MH, MR, MMR) Color: TIFF (Profile-C)		Hard Disk Drive Supported PDL: 80GB (Shared) UFR II/PCL 5c/PCL 6 Optional PDL Support: PostScript 3 Emulation (PS Printer Kit-N2*) Printer Drivers UFR II: Windows® (Windows 2000/XP/Server 2003, Windows Vista™) Citrix MetaFrame Macintosh® (OS 10.2.8 or Later) PCL 5c: Windows (Windows 98/Me/2000/XP/Server 2003, Windows Vista) Citrix MetaFrame PCL 6: Windows (Windows 98/Me/2000/XP/Server 2003, Windows Vista) Citrix MetaFrame XPS:** Windows Vista PS3 (Optional): Windows (Windows 98/Me/2000/XP/Server 2003, Windows Vista) Citrix MetaFrame Macintosh (OS 10.2.8 or Later) imagePASS-H1 Connectable Device: Color imageRUNNER C5185 CPU: Celeron M 1.5GHz System: System 8e Memory: 256MB (Std.), 512MB (Max.) Hard Disk Drive: 80GB Interfaces (to LAN): 10/100/1000Base-T (RJ-45) Supported PDL: Adobe® PostScript® 3, PCL 5c Utility Software: Remote Scan 5.3 Command WorkStation for Windows Command WorkStation for Mac Options: 256MB RAM, Secure Erase v1.0, Hot Folders v2.0, Impose v2.6 ColorPASS-GX100 Connectable Device: Color imageRUNNER C5185 CPU: Intel® Pentium® 4, 3.2GHz System: System 8 Memory: 1GB (Std.), 2GB (Max.) Hard Disk Drive: 160GB DVD-ROM: Standard Interfaces (to LAN): 10/100/1000Base-T (RJ-45) Supported PDL: Adobe PostScript 3 Options: 1GB RAM, GA Package, GA Premium, Production Package, Impose v2.6, ACI Kit, Removable HDD Cassette Feeding Unit-Z2*** Paper Sizes: 12" x 18", 11" x 17", Legal, Letter, Letter-R, Statement-R, Executive Paper Drawers Capacity: 550 Sheets x 2 Cassettes [20 lb. Bond (80g/m ²)] Dimensions (H x W x D): 12-1/4" x 24-3/8" x 27-3/4" Paper Deck-Y1 Paper Size: Letter Paper Deck Capacity: 2,700 Sheets (20 lb. Bond 80g/m ²) Dimensions (H x W x D): 17" x 12-3/4" x 23-1/4"	
--	--	--	--	---	--

(Specifications are continued on back cover.)

Finisher-X1

Number of Trays:	1 Tray
Paper Size	
Standard:	12" x 18", 11" x 17", Legal, Letter, Letter-R, Statement-R, Executive
Non-Standard Size:	(3-15/16" x 5-7/8" to 12-7/8" x 18")
Weight:	17 lb. Bond to 140 lb. Index
Paper Capacity Per Tray:	1,000 Sheets (Letter, Statement-R, Executive) 500 Sheets (12" x 18", 11" x 17", Legal, Letter-R)
Paper Capacity of Staple Mode:	1,000 Sheets/30 Sets (Letter, Executive) 500 Sheets/30 Sets (11" x 17", Legal, Letter-R)
Max. Stapling Capacity	
Letter, Executive:	50 Sheets (17 lb. to 20 lb. Bond) 30 Sheets (20 lb. to 28 lb. Bond) 2 Sheets (28 lb. Bond to 140 lb. Index)
11" x 17", Legal, Letter-R:	30 Sheets (17 lb. to 20 lb. Bond) 20 Sheets (20 lb. to 28 lb. Bond) 2 Sheets (28 lb. Bond to 140 lb. Index)
Staple Mode:	Corner (11" x 17", Legal, Letter, Letter-R, Executive)
Dimensions (H x W x D):	28-5/8" x 16-1/4" x 24"

Finisher-W1/Saddle Finisher-W2

Number of Trays:	3 Trays
Paper Size	
Standard:	12" x 18", 11" x 17", Legal, Letter, Letter-R, Statement-R, Executive
Non-Standard Size:	(3-15/16" x 5-7/8" to 12-7/8" x 18")
Paper Weight:	17 lb. Bond to 140 lb. Index
Paper Capacity Per Tray	
Non-Collating Tray:	250 Sheets (Letter, Statement-R, Executive) 125 Sheets (12" x 18", 11" x 17", Legal, Letter-R)
Upper Tray:	1,300 Sheets (Letter, Statement-R, Executive)

Lower Tray:

650 Sheets (12" x 18", 11" x 17", Legal, Letter-R)
2,450 Sheets (Letter)
1,700 Sheets (Statement-R, Executive)
650 Sheets (12" x 18", 11" x 17", Legal, Letter-R)

Paper Capacity of Staple Mode

Upper/Lower Tray:

1,300 Sheets/100 Sets (Letter, Executive)
650 Sheets/50 Sets (11" x 17", Legal, Letter-R, Staple with different paper sizes)

Max. Stapling Capacity

Letter, Executive:

50 Sheets (17 lb. to 20 lb. Bond)
30 Sheets (20 lb. to 28 lb. Bond)
2 Sheets (28 lb. Bond to 140 lb. Index)

11" x 17", Legal, Letter-R:

30 Sheets (17 lb. to 20 lb. Bond)
20 Sheets (20 lb. to 28 lb. Bond)
2 Sheets (28 lb. Bond to 140 lb. Index)

Staple Mode:

Corner (11" x 17", Legal, Letter, Letter-R, Executive)
Double (11" x 17", Legal, Letter, Letter-R, Executive)

Saddle-Stitching†

Acceptable Paper Sizes: 12" x 18", 11" x 17", Legal, Letter-R

Saddle Stitch Capacity: 15 Sheets (17 lb. to 20 lb. Bond)
10 Sheets (20 lb. to 28 lb. Bond)

Tray Capacity:

25 Sets (1 to 5 Sheets)
15 Sets (6 to 10 Sheets)
10 Sets (11 to 15 Sheets)

Folding:

V-Fold

Dimensions (H x W x D):

46-1/4" x 26-3/4" x 25-7/8"

Puncher Unit-AH1††

Paper Size:

11" x 17", Legal, Letter, Letter-R

Max. Paper Weight:

17 lb. Bond to 140 lb. Index

Punch Type:

3 Holes (Letter, 11" x 17")
2 Holes (Legal, Letter-R)

Punch Waste Tray Capacity:

When approximately 3,000 Sheets of paper have been punched

Dimensions (H x W x D):

32-3/4" x 4-1/4" x 24-1/2"

Other Optional Accessories

- Encrypted Secured Print Software-C1†††
- Barcode Printing Kit-A1†††
- Web Access Software-E1 *
- Universal Send PDF Advanced Feature Set-A1 **
- Universal Send PDF Security Feature Set-A1 **
- Digital User Signature PDF Kit-A1
- Secure Watermark-A1 *
- Super G3 Fax Board-V2
- Super G3 Multi-Line Fax Board-H2
- imageRUNNER 512MB Expansion RAM-C1
- HDD Encryption Kit-B1
- HDD Erase Kit-A1
- Voice Guidance Kit-A2*
- Voice Operation Kit-A1*
- Remote Operator's Software Kit-A2
- Plain Pedestal-E2
- Document Tray-J1
- Copy Tray-M1
- Copy Tray-N1
- Stack Bypass Alignment Tray-B1
- Card Reader-D1
- Key Switch Unit-A2
- Braille Label Kit-A1
- ADF Access Handle-A1
- Stamp Unit-A1
- eCopy Suite
- imageWARE™ Suite
- Access Management System Kit-A1
- Workflow Composer-B1

Footnotes:

- * When configured on C5185, requires Universal Send PDF Advanced Feature Set-A1
- ** When configured on the C5185, requires Universal Send PDF Security Feature Set-A1
- *** Requires Digital User Signature Kit-A1
- Requires iR 512MB Expansion RAM-C1
- ** Check with your Authorized Canon Dealer for availability.
- *** C5185/C5185i requires Cassette Feeding Unit-Z2 or Plain Pedestal-E2.
- † Available with Saddle Finisher-W2 Only
- †† Puncher Unit-AH1 can only be installed with either the Finisher-W1 or Saddle Finisher-W2.
- ††† Requires UFR II/PCL Printer Kit-N2
- ▲ When configured on the C5185, requires UFR II/PCL Printer Kit-N2 if printing Web pages; requires PS Printer Kit-N2 on C5185/C5185i if printing PDF files
- ▲▲ Standard on C5185i
- Voice Guidance Kit and Voice Operation Kit cannot be installed together.

Canon
image*ANYWARE*

As an ENERGY STAR® Partner, Canon U.S.A., Inc. has determined that these products meet the ENERGY STAR guidelines for energy efficiency. ENERGY STAR and the ENERGY STAR mark are registered U.S. marks. Microsoft, Windows, and Windows NT are registered trademarks and Windows Vista is a trademark of Microsoft Corporation in the United States and/or other countries. Macintosh is a trademark of Apple Computer, Inc. Adobe, Acrobat, and PostScript are registered trademarks of Adobe Systems Incorporated in the United States and/or other countries. Intel, Celeron, and Pentium are registered trademarks of Intel Corporation. CANON, IMAGERUNNER, and MEAP are registered trademarks of Canon Inc. in the United States and may also be registered trademarks or trademarks in other countries. IMAGEWARE is a registered trademark of Canon U.S.A., Inc. in the United States and is a trademark of Canon Inc. in certain countries. IMAGEANYWARE is a trademark of Canon. All referenced product names and other marks are trademarks of their respective owners. Specifications and availability subject to change without notice.
©2007 Canon U.S.A., Inc. All rights reserved.

Federal Law prohibits copying of certain documents. Violators may be subject to penalties. We suggest that you check with your own legal counsel. Canon U.S.A., Inc. and Canon Canada, Inc. intend to cooperate with Law Enforcement Agencies in connection with claims of unauthorized copying.



0098W248
0707-C5185-50M-LIS



PRINTED ON RECYCLED
PAPER IN THE U.S.A.



1-800-OK-CANON
www.usa.canon.com

Canon U.S.A., Inc.
One Canon Plaza
Lake Success, NY 11042